

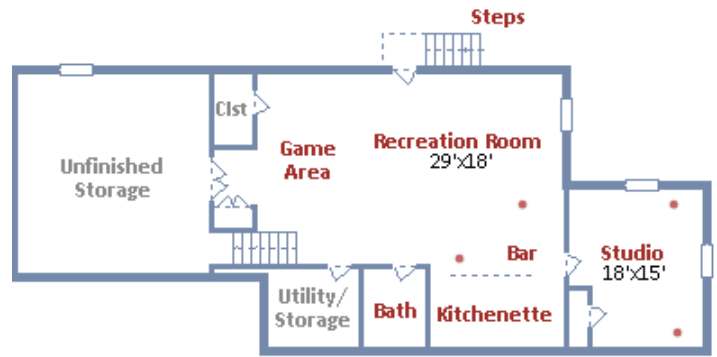


*Welcome home*

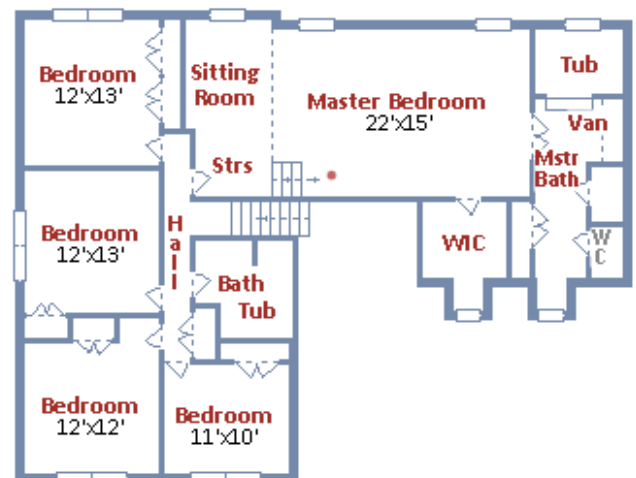
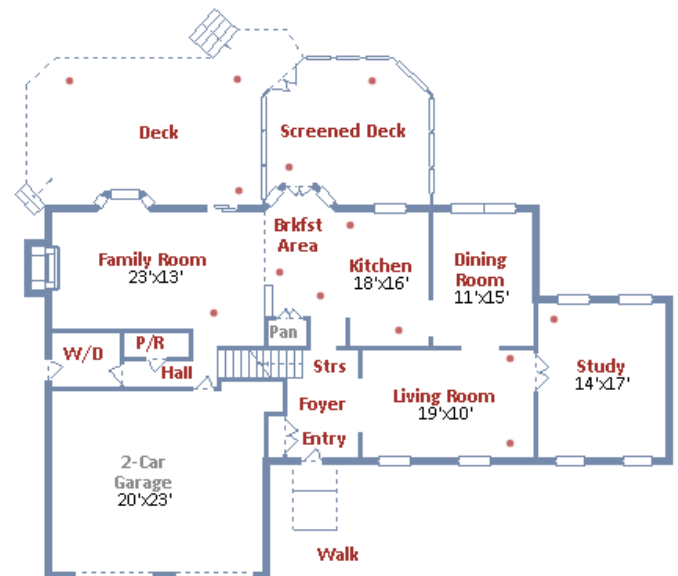
14621 Silverstone Dr, Silver Spring, MD 20905



Welcome home to this stunning 5 bedroom 3 ½ bathroom colonial with over 4,500 square feet of living space on three levels in the sought after Naples Manor community. From the spacious master bedroom nicely appointed with a sitting room, walk-in closet and large en suite bathroom featuring a soaking tub, separate shower and large linen closet to the huge finished lower level rec room this home never stops giving. The main level boasts gleaming hardwood floors in the two story foyer and the living and dining rooms. Just off the foyer is a gourmet eat-in chef's kitchen with stainless steel appliances, granite counters, a large pantry and access to the three season sunroom. The step-down family room with a wood burning fireplace and heated floors is a cozy space for those cold winter nights. Rounding off the main level is a home office with custom built in bookcases and workspace for two. All 5 bedrooms are on the upper level including the master suite, 4 additional large bedrooms with generous closet space and a hall bath. The finished, walkout basement has a wet bar in the expansive living space, a bonus room that can be used as a work out room, second office or guest bedroom. The third full bath is in the basement. There is also plenty of storage space. This home includes a two car garage and a huge deck off the family room which is the perfect setting for summertime living with its professional landscaping. Recent updates include new windows and fresh paint. Naples Manor is an active community and is conveniently located to the ICC, shopping and the Stonegate Swim Club.



Copyright © TruPlace, Inc.









# 14621 Silverstone Dr

Silver Spring, MD 20905

## Property Details

- Built: 1987
- Square Footage: 5,286
- Lot Size: 0.40
- Estimated tax & non-tax charges for first full fiscal year of ownership: \$6,223

## Local Amenities

- Stonegate Swim Club
- Stonegate Park
- Plaza Del Mercado Shopping Center (Aldi's)
- Cloverly Shopping Center
- Colesville Shopping Center
- Close to ICC



**CLARE TOCK**

301-642-4364

clare@tamara4homes.com

www.tamara4homes.com



**TowerHill Realty**

8218 Wisconsin Avenue, 310

Bethesda, MD 20814

Phone: 301-857-1867



**KATHLEEN BRIESE**

301-802-3124

kathleen@tamara4homes.com

www.tamara4homes.com